

Company Overview



The German speaking market is supported from an office in Maastricht. Expansion is continuing into Europe. Recently sales have begun into North and South America.

The company consistently wins awards for quality and innovation in production. It is accredited to ISO9001. The assembly area uses World-Class Manufacturing techniques to mistake proof, prevent waste and continuously improve.

The company excels at producing voltage converters that are compact, cool running, and emit negligible levels of RFI. The products are assembled using surface mount assembly technology to improve reliability and reduce cost.

AlfaTRONIX



AlfaTronix was established 25 years ago to manufacture reliable voltage converters for the marine market. The converters supplied communications and navigation equipment, often used in life threatening situations. Today, AlfaTronix Ltd manufacture DC to DC and AC to DC voltage converters for all types of mobile electrical systems fitted on vessels, vehicles and aircraft.

The company is based in Poole, Dorset, on the South Coast of Britain. It employs 22 people. The annual sales amount to almost £2M. In most years, exports account for the majority of production. Currently we export to over 30 countries. The distribution system is constantly evolving and the company is always on the lookout for fast moving distributors.

The company has several sites supporting sales activities. Poole is where the head office and manufacturing facility is located. AlfaTronix Sarl is a sister company in Paris, which supports the French speaking market.



Voltage
Converters

for use on

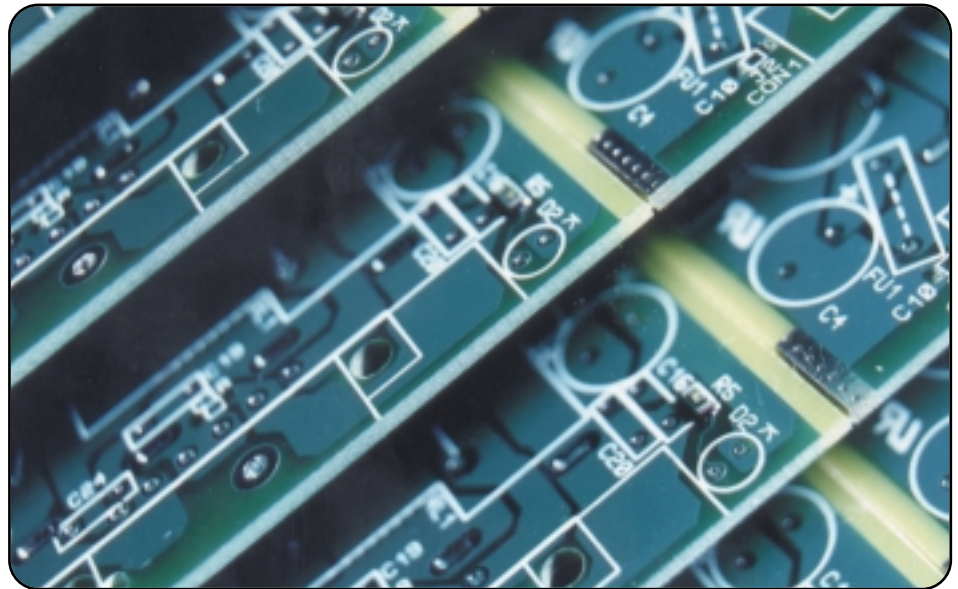
vehicles,
vessels *and*
aircraft

Product Overview

The AlfaTronix voltage converter range is primarily designed for use on the mobile electrical systems fitted to vehicles, vessels and aircraft. The complete range covers the popular voltages between 12Vdc to 360Vdc, at continuous power levels of between 36 and 288 Watts. All units operate in switch mode and are assembled using surface mount technology. They are also capable of accepting AC inputs.

The product range has been divided in two depending upon the safety aspects of the voltages that they handle. The PowerMaster products fall into the Low Voltage category operating on electrical systems of between 72Vdc and 360Vdc. The PowerSelector products, which incorporate the PowerVerter products, fall into the Extra Low Voltage category for operation on electrical systems of between 12Vdc and 48Vdc. The division occurs at around 60Vdc.

All the products may be used for constant voltage lead-acid battery charging providing the battery manufacturers guidelines are followed.



The PowerMaster Low Voltage Converters

The PowerMaster converters operate from Low Voltage ac or dc inputs of between 50V to 360V. (For Extra Low Voltage products see our PowerSelector Range). To cover the input voltage range we offer two groups of products. The division occurs at around 140V although there is a wide overlap. Each group cover a 3:1 input range and accept dc or a wide frequency of ac input including 50, 60 and 400Hz. The continuous power ratings are 36, 72 and 144 Watts. The nominal voltage outputs are factory set at 12, 24, 36 or 48Vdc.

The units may be used to supply radiotelephones and other appliances from ac mains used in offices, portable site cabins, communication cabins, telephone exchanges, remote antenna sites, ships, oil rigs, etc. The dc applications include use on trains, cranes and other dc electric traction vehicles such as milk floats, trams, underground vehicles, mining machinery, etc.

The PowerMaster units have been approved to the European Low Voltage Directive and are CE Marked. They also meet the requirements of UL1950 and FCC Class B.

The PowerSelector Extra Low Voltage Converters

The PowerSelector converters, which incorporate our PowerVerter series are designed for Extra Low Voltage (ELV) applications between 12 and 48Vdc. (For higher voltages see our PowerMaster range). The products offer a choice of input and output voltages, from 12Vdc to 48Vdc, in four different power ratings.

They are intended for use with the mobile electrical systems used on vehicles, vessels, aircraft, forklift trucks, electric traction vehicles, trams, trains, cranes, golf buggies, invalid chairs, mining machinery, etc. The 24Vdc to 12Vdc applications are catered for by a sub group of products, the PowerVerter series (see the separate leaflet). This series has been optimised for high volume applications such as on heavy goods vehicles, coaches, buses, construction, forestry and agricultural vehicles and commercial vessels, large yachts and all types of aircraft. Consequently they are manufactured at low cost and offer excellent value for money.

All the PowerSelector products are CE marked and those suitable for road traffic vehicles are also e marked. They all meet the requirements of FCC Class B.



AlfaTronix Limited 29 Newtown Business Park, Poole, Dorset BH12 3LL Great Britain.
Tel: +44 (0) 1202 715517. Fax: +44 (0) 1202 715122. E-mail: sales@alfatronix.ltd.uk
Web Site: <http://www.alfatronix.ltd.uk>